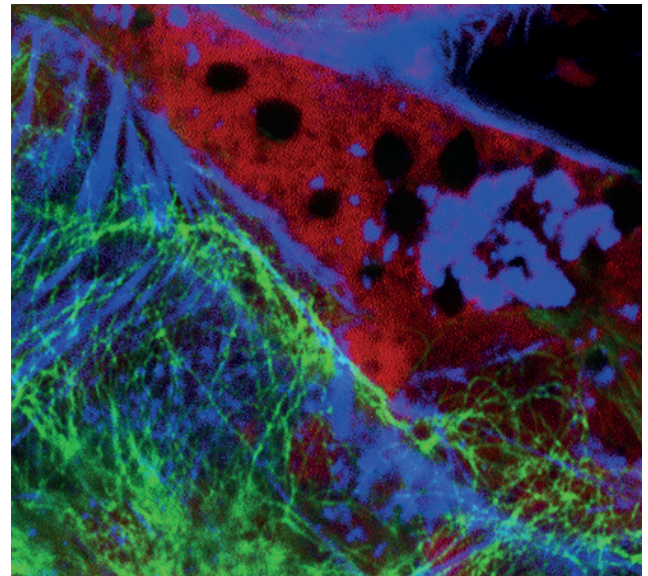


**HIGHEST LIGHT INTENSITY ||
 IDEAL FOR FLUORESCENCE APPLICATIONS ||
 MERCURY SHORTARC REFLECTOR LAMP 200 W**

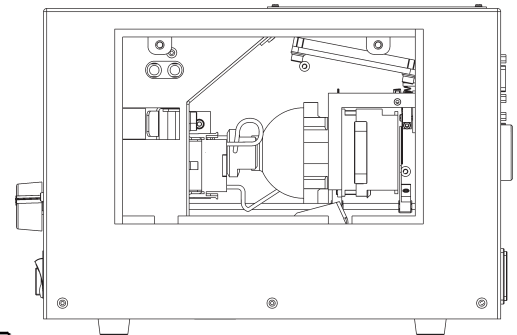
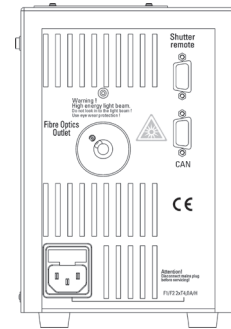
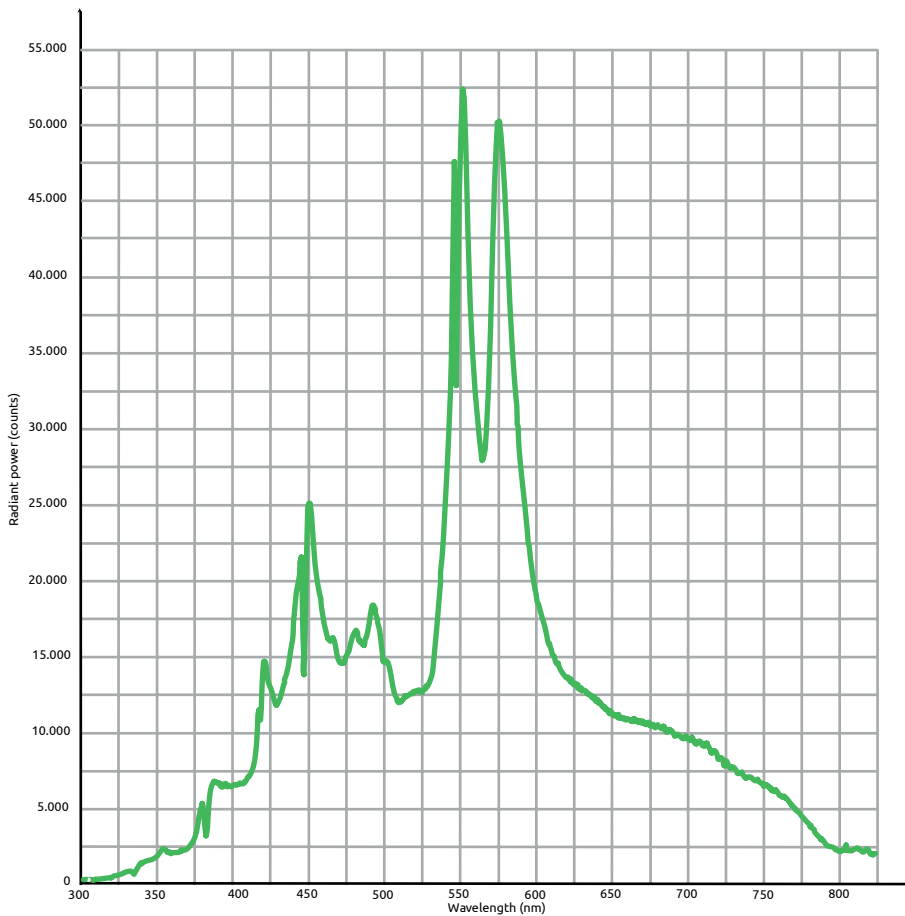


HIGHLIGHTS

- 14 W Light output in a wavelength range 350 - 800 nm
- High lamp life time 2,000 h
- Lamp life monitoring
- Lamp and reflector as unit, easy lamp exchange, no adjustment necessary
- Automatic glare protection
- No heat radiation exposure of the illuminated object
- Motorized shutter
- 5-step dimming

APPLICATIONS

- **Microscopy**
- **Image processing**
- **Forensic**
- **UV-curing**



Features	
Shutter	Frequency max. 40 Hz, switching time approx. 6 ms, control via external switch, USB or CAN bus connection
Dimming	Mechanical, 5 steps 0 to 100%
Operating hour meter	Display lamp operation hours, resettable
Safety	Glare shield, over-temperature protection, internal safety circuit
Specifications	
Mains voltage	100 to 240 VAC, 50 to 60 Hz
Power input	max. 310 VA
Dimensions	
Width x height x depth	210 x 138 x 290 in mm
Gewicht	4,9 kg
Order	
Scope of delivery	LQ-ME 200 with lamp, mains cable, manual
Accessories	see data sheet: compact light sources - accessories

Equipment options	
-3	Light guide retainer Storz long, for light guide active Ø 3 mm
-5	Light guide retainer Storz long, for light guide active Ø 5 mm
-X	Light guide retainer Multipole LUMATEC D

Order example
LQ-ME 200-3

Contact:

+49 3641 35 30-10
sales@lej.de

www.lej.de